

# CORSIA AT A GLANCE SERIES

## EMISSIONS MONITORING OPTIONS

Draft CORSIA SARPs request an aeroplane operator to monitor and record its fuel use from international flights to determine its annual CO<sub>2</sub> emissions, in accordance with an eligible monitoring method approved by the State to which it is attributed.

To simplify the estimation and reporting of CO<sub>2</sub> emissions from international flights for operators with low level of activity in fulfilling their monitoring and reporting requirements, ICAO has developed the CORSIA **CO<sub>2</sub> Estimation and Reporting Tool (CERT)**.

### ICAO CORSIA CO<sub>2</sub> ESTIMATION AND REPORTING TOOL (CERT)

CERT supports aeroplane operators in:

- Estimating CO<sub>2</sub> emissions.
- Populating the Emissions Monitoring Plan and Emissions Report templates.

**CERT** also supports all aeroplane operators in determining if their CO<sub>2</sub> emissions are under the threshold to be exempt from the CORSIA reporting requirements ( $\leq 10\ 000$  tonnes of CO<sub>2</sub> annually).

Aeroplane operators who emit  $\geq 500\ 000$  tonnes of CO<sub>2</sub> annually in 2019 and 2020 from international flights\*, are not eligible to use **CERT** to monitor and report emissions, and must choose one of the five eligible methods for **Fuel Use Monitoring** (the five methods are equivalent and there is no hierarchy for selecting a method).

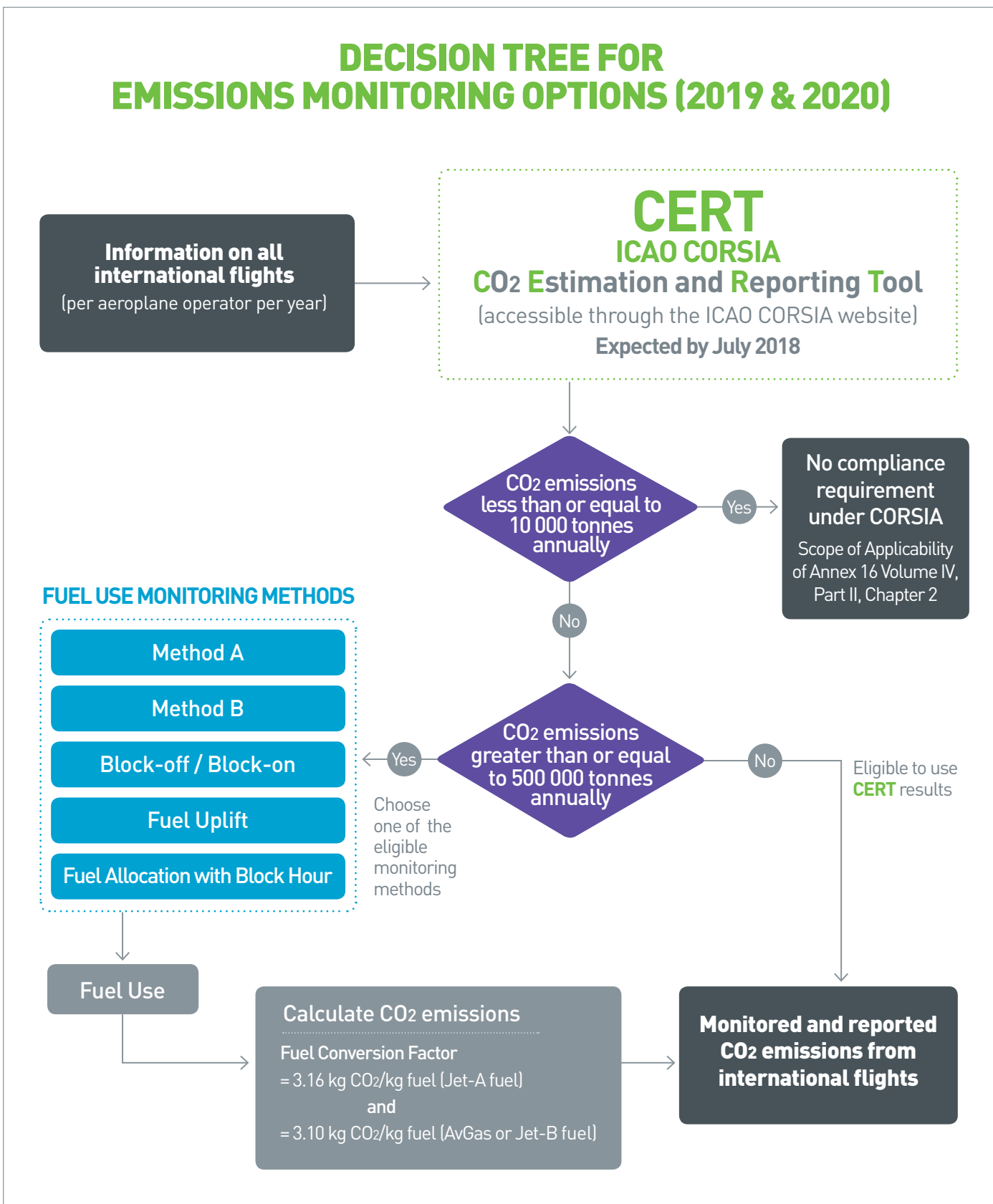
However, all aeroplane operators are able to use **CERT** to fill in any CO<sub>2</sub> emissions data gaps, regardless of their emissions levels.

CERT	Aeroplane Operators International CO <sub>2</sub> Emissions (tonnes) 2019 – 2020*		
	$\leq 10K\ CO_2$	$< 500K\ CO_2$	$\geq 500K\ CO_2$
Preliminary CO <sub>2</sub> Assessment	✓	✓	✓
CO <sub>2</sub> Estimation & Reporting	No CORSIA requirement	✓	Not Eligible to use <b>CERT</b> **
Filling Data Gaps	No CORSIA requirement	✓	✓

\*Note: from 2021-2035 operators can use CERT to estimate and report emissions if their annual emissions from international flights subject to offsetting requirements are  $< 50\ 000$  tonnes of CO<sub>2</sub> annually.

\*\*Note: If an aeroplane operator uses CERT for 2019 CO<sub>2</sub> estimation and reporting (based on their preliminary CO<sub>2</sub> assessment) but exceeds the threshold of 500 000 tonnes in 2019, the State could permit the operator to continue to use CERT during 2020.

This flow diagram presents a decision tree for an aeroplane operator to determine whether they are eligible to use the ICAO CORSIA **CO<sub>2</sub> Estimation and Reporting Tool (CERT)**, or shall use one of the eligible **fuel use monitoring methods**, to monitor and report their CO<sub>2</sub> emissions for international flights in 2019 and 2020.



The information on actions for CORSIA implementation contained in this document is based on the proposal for the First Edition of Annex 16, Volume IV (Standards and Recommended Practices relating to CORSIA) and related materials, as made available to States by means of ICAO State letter AN 1/17.14 – 17/129. The proposed First Edition of Annex 16, Volume IV and related materials are expected to be considered for adoption by the ICAO Council in June 2018 and subject to any changes arising from this process. All reasonable efforts have been made to ensure accuracy, but ICAO makes no warranties in relation to the information contained herein and assumes no responsibility or liability arising in connection with its use or misuse.