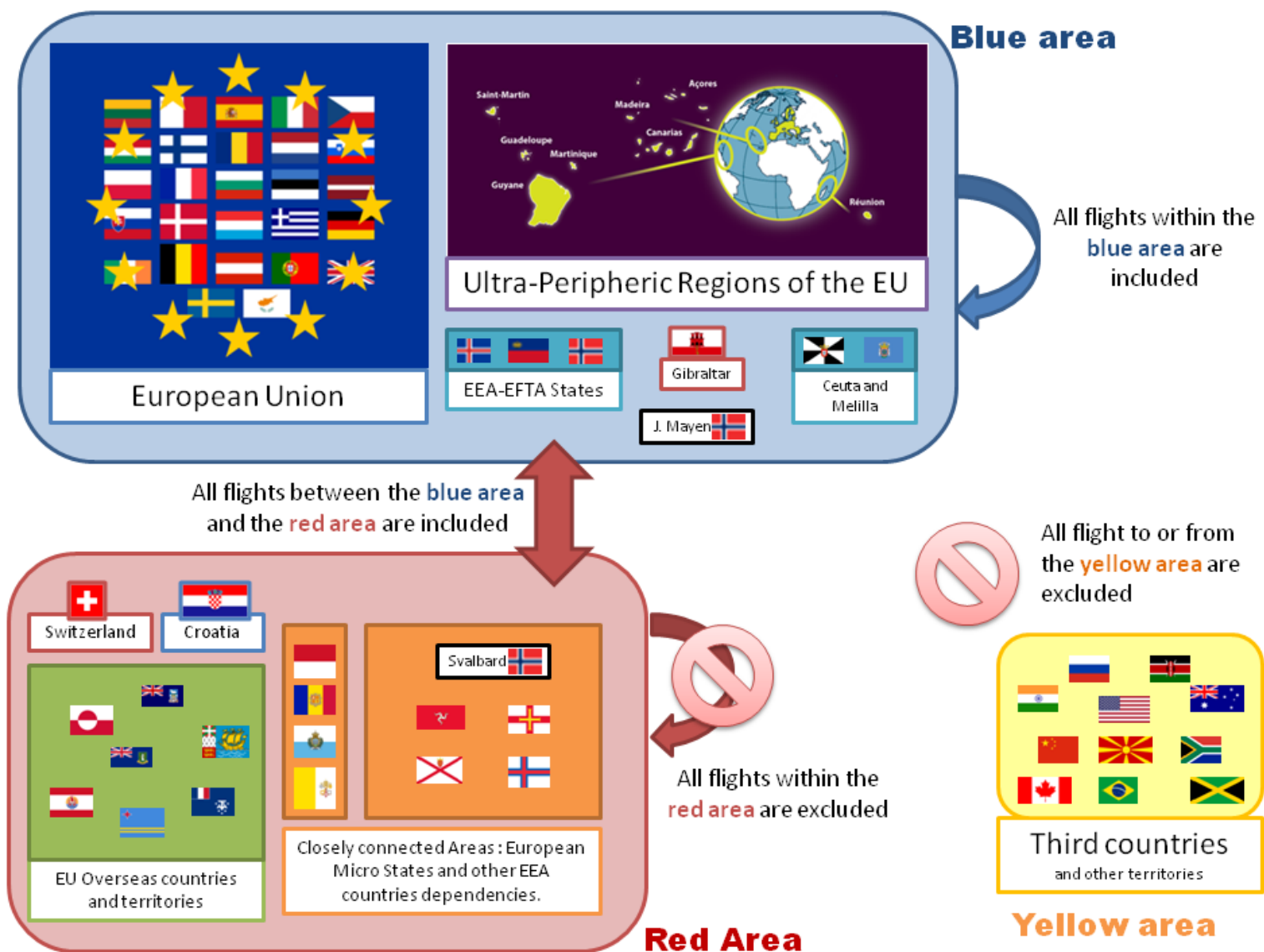


THE GEOGRAPHICAL PERIMETER OF THE « STOP THE CLOCK » DEROGATION

This document shows which flights are **still to be included in the reports** of the operators who chooses to use the “stop the clock” derogation:



Territories included in the blue area

All European Economic Area Member States plus:

<i>ICAO code</i>	<i>Country or territory</i>
EFKG, EFMA	Aland Islands
LP--	Azores
GC--	Canary Islands
GE--	Ceuta and Melilla
SO--	French Guiana
LX--	Gibraltar
TF--	Guadeloupe
ENJA	Jan Mayen
LPMA, LPPS	Madeira
TFFF	Martinique
FME-	Réunion
TFFG	Saint Martin

Territories included in the red area

<i>ICAO code</i>	<i>Country or territory</i>
LS--	Switzerland
LD--	Croatia
LCRA, LCRE	Akrotiri and Dhekelia
n/a	Andorra
TQ--	Anguilla
TNCA	Aruba
TX--	Bermuda
TNCB, TNCE, TNCS	Bonaire, Saba, Sint Eustatius
FJ--	British Indian Ocean Territory
TU--	British Virgin Islands
MW--	Cayman Islands
TNCC	Curaçao
EKVG, EKFA, EKKV, EKMS, EKSY, EKSR, EKSO, EKTB	Faeroe Islands
SF--	Falkland Islands
NT--	French Polynesia
BG--	Greenland
EGJA, EGJB	Guernsey
EGNS	Isle of Man
EGJJ	Jersey
FMCZ	Mayotte
LN--	Monaco
TR--	Montserrat
NW--	New Caledonia
n/a	Pitcairn Islands
TFFJ	Saint Barthélemy
FH--	Saint Helena, Ascension and Tristan da Cunha
LFV-	Saint Pierre et Miquelon
n/a	San Marino
TNCM	Sint Maarten
n/a	South Georgia and the South Sandwich Islands
ENAS, ENSA	Svalbard
MB--	Turks, Caico Islands
n/a	Vatican
NL--	Wallis and Futuna

Countries or territories included in the yellow area

All countries or territories not previously listed in the blue or the red area.